



КОД
ИНФОРМАЦИОННОЙ
БЕЗОПАСНОСТИ

ИТОГИ

КОД ИБ ИТОГИ 2023

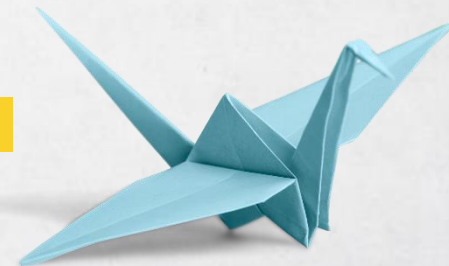
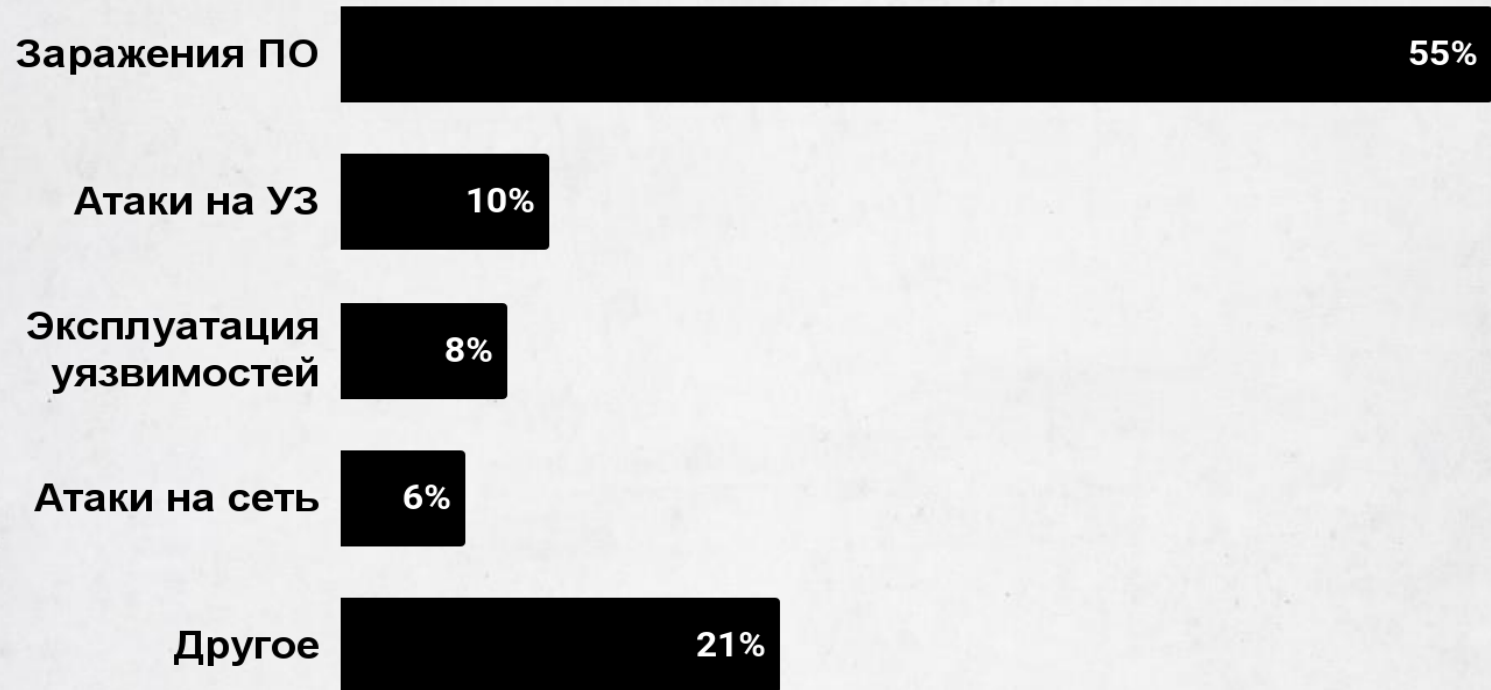
МОСКВА

07 ДЕКАБРЯ 2023



ПАЛЬМИРА БИЗНЕС КЛУБ

Статистика по атакам



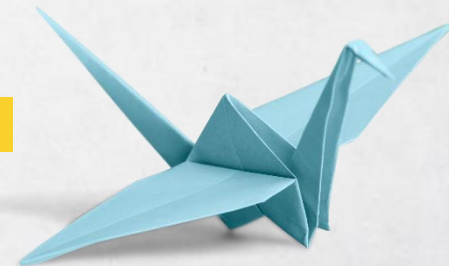
Статистика по атакам

> 50%

Фишинг

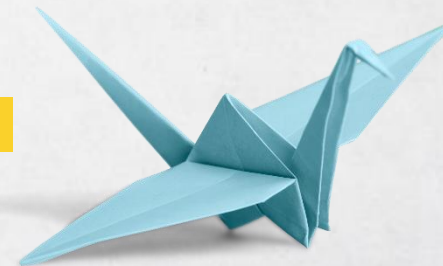
~ 10%

Brute-force



Защита пользователя

2ФА



Про Контур

> 10 000

Сотрудников

> 10 лет экспертизы

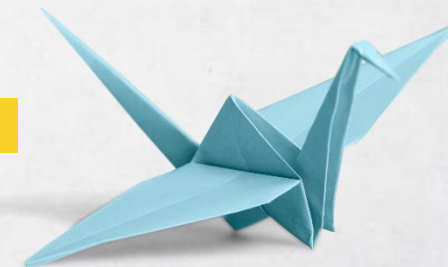
В аутентификации

2.2 млн клиентов

В РФ и за рубежом

1 место SaaS в России

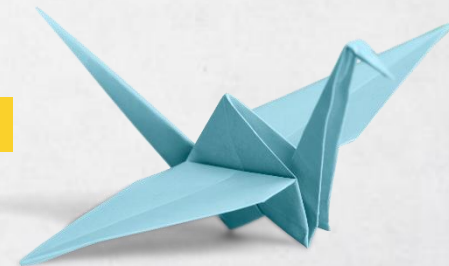
По данным CNews



Защита пользователя

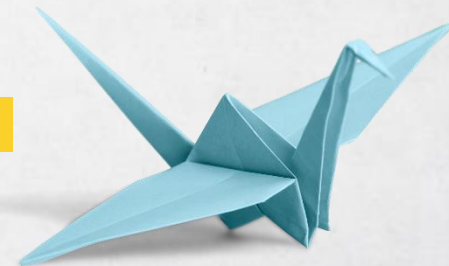
Контур.ID - система 2ФА для:

- VPN
- RDP
- ADFS
- Exchange
- Прочее



Кейс

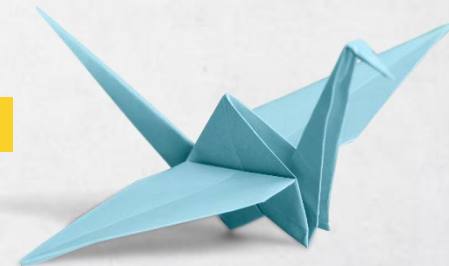
Перебор УЗ с помощью слитой базы паролей



Кейс

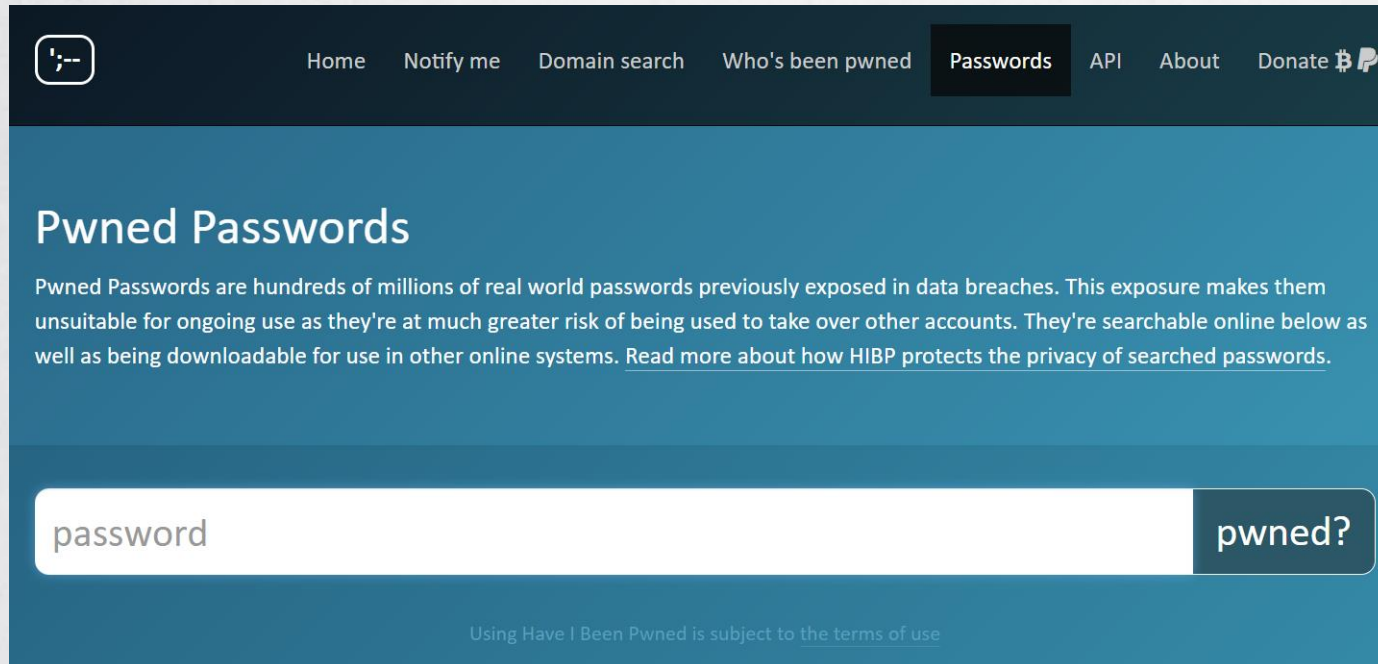
Перебор УЗ с помощью слитой базы паролей

2ФА → 1ФА



Защита пользователя

haveibeenpwned.com



The screenshot shows the top navigation bar of the website with a dark background. On the left is a circular logo containing a semicolon and a minus sign. The navigation menu includes links for Home, Notify me, Domain search, Who's been pwned, Passwords (which is highlighted with a dark background), API, About, and Donate with Bitcoin and PayPal icons. Below the navigation is a teal header section with the title 'Pwned Passwords'. A paragraph of text explains that these are real-world passwords exposed in breaches and are at risk of being used to take over accounts. Below the text is a search input field with the placeholder text 'password' and a dark button labeled 'pwned?'. At the bottom of the teal section, there is a small link to the terms of use.

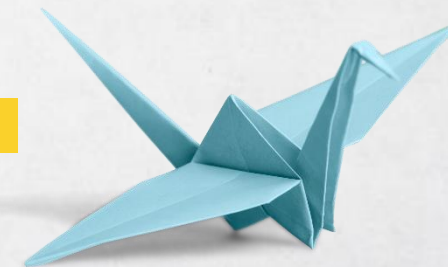
Home Notify me Domain search Who's been pwned Passwords API About Donate ₿ ₪

Pwned Passwords

Pwned Passwords are hundreds of millions of real world passwords previously exposed in data breaches. This exposure makes them unsuitable for ongoing use as they're at much greater risk of being used to take over other accounts. They're searchable online below as well as being downloadable for use in other online systems. [Read more about how HIBP protects the privacy of searched passwords.](#)

 pwned?

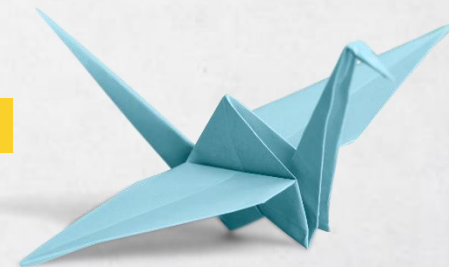
Using Have I Been Pwned is subject to [the terms of use](#)



Защита пользователя

Контур.ID - система проверки свежести пароля:

- Проверка по слитым базам
- Своя база паролей
- Без выхода в интернет



Выводы

- 2ФА - первая, но не единственная необходимость для компании
- Ваша безопасность частично зависит не от Вас
- 2ФА должна быть в паре с механизмом проверки свежести пароля

А как Вы защищаетесь от слитых паролей?

